



# ASSOCIATE DEGREE AND HIGHER DIPLOMA PROGRAMMES

副學士及高級文憑課程

Hong Kong Baptist College was founded by the Baptist Convention of Hong Kong in 1956 as a post-secondary college committed to the provision of a whole person education. In 1983, it became a fully-funded public tertiary institution, and the College gained university status just over a decade later. It was renamed Hong Kong Baptist University (HKBU) in 1994.

Over the years, HKBU has remained committed to the pursuit of excellence in education, research and service to the community. As one of Asia's finest institutions of higher learning, HKBU is dedicated to nurturing future generations of civically engaged community members, and it provides them with a broad-based, transdisciplinary and creative education.

Its seven faculties/schools offer a wide array of programmes across a diverse range of disciplines, from the arts, business, communication, and social sciences to science and technology, Chinese medicine and sport.

With its fundamental strengths in the arts and humanities, HKBU offers an education and research environment that fosters technological progress with a focus on the human dimensions. At the same time, the University is using technology to push the envelope of human imagination in the arts and cultural sphere. Coupled with our unceasing efforts to achieve breakthroughs in science and Chinese medicine, HKBU strives to contribute to the building of a better world and a more compassionate society.

香港浸會學院是由香港浸信會聯會於1956年創辦的私立高等學府，致力提供全人教育。1983年，當時的香港浸會學院獲政府全面資助，成為公立專上學府，至1994年獲得正名，成為香港浸會大學（浸大）。多年來，浸大一直在教育、研究及社會服務上追求卓越。作為亞洲最優秀的高等教育學府之一，浸大致力培育未來世代成為貢獻社會的英才，為他們提供廣泛多元、跨學科及具創意的教育。浸大設有七個學院，為學生提供多樣化的學科選擇，由藝術、工商管理、傳理、社會科學以至科技、中醫及體育等等。

浸大在藝術及人文領域堅實的基礎上，提供適切的教學及研究環境，推動以人為本的科技發展，同時利用科技不斷開拓人類在藝術和文化的想像空間，並在科學及中醫領域上不斷帶來突破，銳意建立一個更美好的世界及仁愛的社會。



COLLEGE OF 國際學院  
INTERNATIONAL EDUCATION

Established in 2000, the College of International Education (CIE) is a self-funded unit of HKBU, offering full-time Associate Degree (AD), Higher Diploma (HD), and Undergraduate (UG) Programmes. The CIE, managed by the School of Continuing Education (SCE), currently enrolls around 3,600 students and is committed to the University's mission of providing quality whole person higher education with a Christian heritage. Students can enjoy the quality campus facilities and amenities in the Shek Mun (Shatin) campus, along with the additional resources available at the HKBU Kowloon Tong and Kai Tak campuses.

國際學院是浸大於2000年成立的自資學院，開辦全日制副學士、高級文憑及學士學位課程。國際學院由持續教育學院管理，目前有3,600名全日制學生就讀，學院秉承基督教教育傳統，致力發展全人教育。同學可以享用位於石門（沙田）校園的優質設施，同時使用浸大九龍塘和啟德校園的學習資源。

# WHY CHOOSE HKBU CIE

## 選擇浸大國際學院的原因

### Qualification Awarded by HKBU 浸大頒授學歷



- The Associate Degree (AD) and Higher Diploma (HD) Programmes are governed by the HKBU quality assurance policies and practices.
- Upon completion of the programmes, students will be awarded an Associate Degree or a Higher Diploma.
- 浸大副學士及高級文憑課程由浸大政策及質素保證架構統轄。
- 完成相關課程後，同學可獲浸大頒授副學士或高級文憑資格。

### Wide Range of Programmes cater to Different Interests



#### 多元課程選擇 貼合學習興趣

- CIE offers 28 AD Concentration Studies and HD Programmes across the 5 major disciplines of Applied Science, Arts and Languages, Business, Communication, and Social Sciences.
- The wide range of choices in our curriculum and flexibility in choosing elective courses cater to different interests, talents and aspirations of our students.
- 課程選擇廣泛，共28項副學士專修及高級文憑課程，涵蓋五大學術範疇，包括應用科學、人文及語言學、商學、傳理學與社會科學。
- 同學可按學習興趣、才能和志向，靈活組合選修科目。

### Comprehensive Student Development 關顧學生全面發展



- CIE puts emphasis on experiential learning through an array of student development programmes. Over 300 activities are arranged allowing more than 5,000 participants to join annually.
- Programmes ranging from academic seminars, academic and career development, service learning, internship programmes, overseas exchange and study tours, leadership trainings, various competitions, and micro-certification to college publications.
- 學院重視同學的體驗學習，積極推出一連串的學生發展計劃，每年舉辦超過300項活動，共有5000多人次參加。
- 活動包括學術研討會、升學及生涯規劃、服務學習、企業實習、海外交流及考察團、領袖訓練、公開比賽、微證書課程以及出版學院刊物等。

### Your Ideal Pathway to University and Successful Career 為你打開大學及專業之門



	AD 副學士	HD 高級文憑
<b>Programme Duration</b> 修讀年期	2 years 兩年	
<b>What You will Learn</b> 課程講授	Over 60% of broad knowledge base and generic skills that facilitate you to pursue further studies. 超過60%課程內容為廣泛知識及通用技能，為同學日後進一步升學奠定堅實的知識基礎。	Over 60% of discipline specific knowledge and skills, to equip you for career development or further studies. 超過60%課程內容為實用性專業知識和技能，以裝備同學應對未來就業或升學的需求。
<b>Award</b> 修業證書	Associate Degree awarded by HKBU 浸大頒授副學士	Higher Diploma awarded by HKBU 浸大頒授高級文憑
<b>Articulation Opportunities</b> Locally/Abroad 本地/海外升學銜接	Graduates can choose to undertake HKBU self-funded Undergraduate Programmes, local UGC-funded/self-funded degree programmes and top-up degree programmes offered by overseas universities. 畢業生可選擇銜接浸大自資學士學位課程、本地教資會資助/自資學士學位課程，以及海外大學開辦之銜接學位課程。	

### Ample Articulation Opportunities and High Articulation Rate



#### 多元升學途徑 超過九成副學士畢業生成功升讀學士學位

- In 2024, the articulation rate reached 91%. Among these graduates, 83.9% were admitted to undergraduate programmes offered by the eight UGC-funded local universities.
- The College places great emphasis on providing different articulation opportunities for students. Students can take the "2+2" study mode and earn a Bachelor's Degree in 4 years.
- Since the establishment of the College, CIE has nurtured over ten thousand AD graduates who successfully articulated to local and overseas undergraduate programmes.
- In the past 3 years, there were around 1,700 AD graduates who undertook undergraduate studies in the eight UGC-funded local universities.
- 2024學年副學士畢業生升學率高達91%，當中83.9%升讀八間教資會資助院校學士學位課程。
- 國際學院為同學提供多元升學出路，讓同學可以「2+2」升學模式，四年完成學士學位課程。
- 學院成立以來，培育了過萬位副學士畢業生升讀本地及海外學士學位課程。
- 過去三年，近1,700位副學士畢業生成功升讀八間教資會資助院校學士學位課程，達成升學願景。

# GRADUATE SURVEY

for HKBU Associate Degree Programme 2024

2024年浸大副學士畢業生升學統計

91%

## Further Study to Undergraduate Programmes 升讀學士學位課程

6% Employment 就業

3% Others 其他

Number of respondents 回覆調查畢業生人數 740  
Number of graduates 畢業生人數 1103

## Undergraduate Programmes offered by the Eight UGC-funded Local Universities 八大教資會資助院校學士學位課程

50.5% UGC-funded Undergraduate Programmes  
政府資助學士學位課程

25.7% HKBU 浸大	5.8% EdUHK 教大	5.5% PolyU 理大	5.1% CityU 城大
4.6% CUHK 中大	1.9% LU 嶺大	1.2% HKU 港大	0.7% HKUST 科大

31.9% HKBU Self-funded Undergraduate Programmes  
浸大自資學士學位課程

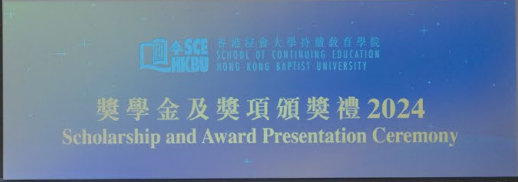
1.5% Self-funded Undergraduate Programmes offered by other UGC-funded Local Institutions  
其他教資會資助院校自資學士學位課程

83.9%

15.4% Self-funded Undergraduate Programmes offered by other Local Institutions  
其他本地院校自資學士學位課程

0.7% Other Non-local Undergraduate Programmes  
海外升學





# SCHOLARSHIPS AND FINANCIAL AID

## 獎學金及學生資助計劃

For details, please visit the College website  
詳情請瀏覽本院網站



CIE is offering various types of scholarships and financial assistance to encourage students to excel in their studies and develop their talents. In 2023/24, around 500 AD, HD and UG students were awarded scholarships with a total of over HK\$5.5 million.

國際學院設有多項獎助學金，以鼓勵同學爭取更佳成績，發展才能。於2023/24學年，近500名副學士、高級文憑和自資學士同學獲頒逾港幣550萬元的獎學金。



### Scholarship 獎學金

CIE	Entrance Scholarship, Academic Achievement, Special Talent and Service, and Financial Aid.
HKSAR Government	Subsidy Schemes on Exchange for Post-secondary Students, and Self-financing Post-secondary Scholarship Scheme.
國際學院	入學獎學金、多項學術成就、特殊才能及服務獎助學金，以及資助計劃。
香港特區政府	專上學生境外交流資助計劃及香港特區政府自資專上獎學金計劃。



### Financial Aid 資助計劃

Students can apply for the HKSAR Government's Financial Assistance Scheme for Post-secondary Students, Non-means-tested Loan Scheme for Post-secondary Students and Continuing Education Fund.

同學可按需要申請香港特區政府專上學生資助計劃、專上學生免入息審查貸款計劃、持續進修基金等學費資助及貸款。

# CAMPUSES AND FACILITIES

## 校園設施

### Shek Mun (Shatin) Campus 石門(沙田)校園



MI-Lab and Comm:aLive Studio  
動態影像室及廣播製作室



Fitness Room  
健身室



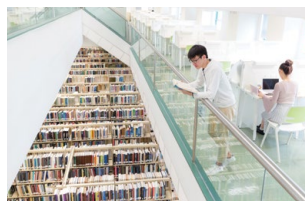
Indoor Heated Swimming Pool  
室內恆溫游泳池



Podium Activities Room  
平台活動室



### Kowloon Tong Campus 九龍塘校園



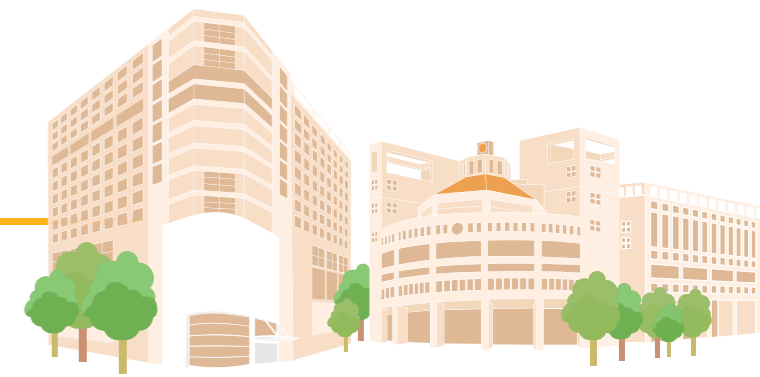
Library  
圖書館



Joint Sports Centre  
聯校運動中心

# EARN AN HONOURS DEGREE IN 4 YEARS

## 四年完成榮譽學士學位



### HKDSE 香港中學文憑 考試

Or 或

■ Diploma of College  
Foundation Studies (SCE, HKBU)  
浸大大專基礎教育文憑課程

■ Diploma of Applied Education/  
Diploma Yi Jin (SCE, HKBU)  
浸大應用教育文憑課程/  
浸大毅進文憑課程

■ International Qualifications  
國際學歷

■ JEE (Gaokao)  
中國國家統一高考

■ Other QF Level 3 Qualifications  
其他資歷架構第三級學歷

## Associate Degree & Higher Diploma Programmes 副學士及高級文憑課程 **2** Years



Division of  
Applied Science  
應用科學學部

AD	Environmental Conservation Studies	環境保育學
AD	Financial Technology	金融科技
AD	Geography and Resources Management	地理及資源管理
AD	Health Sciences	健康科學
AD	Life Science	生命科學
AD	Nutrition and Food Management	營養與食物管理



Division of  
Arts and Languages  
人文及語言學部

AD	Chinese for Professional Purposes <sup>†</sup>	專業中文 <sup>†</sup>
AD	Cultural Studies	文化研究
AD	Music Studies	音樂學
AD	Professional Communication and English Studies	專業傳意及英語研究
AD	Visual Arts	視覺藝術



Division of  
Business  
商學部

AD	Business Administration	工商管理
AD	Financial Management	財務管理
AD	Marketing	市場學
HD	Accounting	會計學
HD	Tourism and Hospitality Management	旅遊及款待業管理



Division of  
Communication  
傳理學部

AD	Creative Communication	傳理學
AD	Creative Digital Media Design	創意數碼媒體設計
AD	Film, Television and Digital Media Studies <sup>†</sup>	電影、電視及數碼媒體學 <sup>†</sup>
AD	Media Communication	媒體傳播
HD	Art Tech Design	藝術科技設計



Division of  
Social Sciences  
社會科學學部

AD	Applied Social Service <sup>†*</sup>	應用社會服務 <sup>†*</sup>
AD	History and Hong Kong Studies <sup>†</sup>	歷史及香港研究 <sup>†</sup>
AD	Practical Philosophy	實踐哲學
AD	Psychology	心理學
AD	Society and Wellness Studies	社會與健康研究
AD	Sociology and Digital Society	社會學與數碼社會
AD	Sport and Recreation Studies	運動及康樂學

<sup>†</sup> Applicants should be competent in reading and writing Chinese, and able to communicate in Cantonese 申請人須具備中文讀寫能力，並能以廣東話溝通

<sup>\*</sup> Applicable to local applicants only 只供本地生申請



## **2** Years Self-funded Undergraduate Degree Programmes 自資學士學位課程

Bachelor of Social Sciences (Hons) in Environment and Resources Management  
環境及資源管理社會科學學士(榮譽)

Bachelor of Arts (Hons) in Cultural Studies and Creative Industries  
文化研究及創意產業文學士(榮譽)

Bachelor of Commerce (Hons) in Human Resources Management  
人力資源管理學商學士(榮譽)

Bachelor of Commerce (Hons) in Marketing  
市場學商學士(榮譽)

Bachelor of Arts (Hons) in Creative Writing for Film, Television and New Media<sup>\*</sup>  
新媒體及影視創意寫作文學士(榮譽)<sup>\*</sup>

Bachelor of Social Sciences (Hons) in Integrated Communication Management<sup>\*</sup>  
綜合傳播管理學社會科學學士(榮譽)<sup>\*</sup>

Bachelor of Social Sciences (Hons) in Media and Social Communication<sup>\*</sup>  
媒體及社會傳播社會科學學士(榮譽)<sup>\*</sup>

Bachelor of Social Sciences (Hons) in Psychology  
心理學社會科學學士(榮譽)

Bachelor of Social Sciences (Hons) in Social Policy  
社會政策社會科學學士(榮譽)

Bachelor of Social Sciences (Hons) in Sport and Recreation Leadership  
運動及康樂領袖學社會科學學士(榮譽)

<sup>\*</sup> Applicants should be competent in reading and writing Chinese. Either Cantonese or Putonghua may be used, depending on particular pedagogical strategy 申請人須具備中文讀寫能力，課堂或會輔以廣東話或普通話授課

## Other Articulation Opportunities 其他升學出路

Senior Year Places (Year 3)  
of UGC-funded Undergraduate  
Programmes<sup>△</sup>  
教資會資助高年級學額  
(三年級)<sup>△</sup>

Other Local and Non-local Institutions  
其他本地及海外院校

<sup>△</sup> Available to local students only  
只供本地學生報讀

# ADMISSION REQUIREMENTS

## 入學要求

### Associate Degree Programme 副學士課程

- Level 2 in five HKDSE subjects\* (including Chinese Language\* and English Language); or
- Satisfactory completion of the Diploma Yi Jin, Foundation Diploma, Diploma of General Studies, Diploma of Applied Education; or
- International qualifications, including but not limited to IB, GCE-AL and SAT, to be considered by the College; or
- Other equivalent qualifications to be considered and assessed by the College on a case-by-case basis; or
- Aged 21+ with acceptable qualifications to justify admission

+ If one of the HKDSE subjects is Citizenship and Social Development (CSD), the minimum entrance requirement would be "Attained" for CSD and Level 2 in four other HKDSE subjects, including Chinese\* and English. Level 2 in Mathematics Extended Part (Module 1 or Module 2) is recognised as one of the five HKDSE subjects. Applicants can use Applied Learning subjects for admission purposes.

\* For Non-Chinese Speaking HKDSE candidates, the following qualifications are recognised by the College as equivalent to HKDSE Chinese Language: 1. Grade E or above in GCE A/AS Level Chinese; or 2. Grade C or above in GCSE/IGCSE/GCE O-Level Chinese; or 3. "Attained" or above in Applied Learning Chinese.

- 香港中學文憑考試五科\* (包括中國語文\*及英國語文) 達第二級; 或
- 完成毅進文憑、基礎課程文憑、基礎教育文憑、應用教育文憑; 或
- 經由國際學院考慮的國際學歷, 包括但不限於IB、GCE-AL、SAT; 或
- 經由國際學院個別考慮及評核的其他同等學歷; 或
- 年滿21歲並持相關入學資格人士

+ 如其中一科為公民與社會發展, 最低入學要求為在該科取得「達標」, 以及在其他四科 (包括中國語文\*和英國語文) 達第二級。數學延伸部份 (單元一或單元二) 如達第二級可獲接納為該五科之一。申請人可以應用學習科目的成績作申請之用。

\* 非華語文憑試考生可用以下資歷作文憑考試中國語文入學要求的另外選擇: 1. GCE A/AS Level Chinese取得E級或以上; 或 2. GCSE/IGCSE/GCE O-Level Chinese 取得C級或以上; 或 3. 香港中學文憑考試應用學習中文取得「達標」或以上。

#### Associate Degree Programme 副學士課程 Tuition Fee 學費

For Local Applicants 本地生申請:

**HK\$31,250** per semester 每學期

one year in total 每年合共: HK\$62,500

For Non-local Applicants 非本地生申請:

HK\$39,750 per semester 每學期

HK\$79,500 per year 每年學費

### Higher Diploma Programmes 高級文憑課程

- Level 2 in five HKDSE subjects\* (including Chinese Language\* and English Language); or
- Relevant and substantial work experience and/or prior qualification(s) obtained in or outside Hong Kong with demonstrated ability to undertake sub-degree education; or
- Successful completion of the Diploma of Applied Education or equivalent; or
- Other equivalent qualifications to be assessed by the School/College; or
- Aged 21+ with acceptable qualifications to justify admission

+ If one of the five HKDSE subjects is Citizenship and Social Development, the minimum entrance requirement would be "Attained" in this subject and Level 2 in four other HKDSE subjects (including Chinese Language\* and English Language). Level 2 in Extended Part of Mathematics (Module 1 or Module 2) is recognised as one of the five HKDSE subjects. Applicants can use Applied Learning subjects for admission purposes.

\* "Attained" or above in Applied Learning Chinese (for non-Chinese speaking students) would be accepted as an alternative Chinese Language qualification. Applicants may be required to attend an interview.

- 香港中學文憑考試五科\* (包括中國語文\*及英國語文) 達第二級; 或
- 在本港或境外取得豐富的相關工作經驗及/或資歷, 並證明有能力接受副學位教育; 或
- 完成應用教育文憑或同等學歷; 或
- 經由學院評審的其他同等學歷; 或
- 年滿21歲並持相關入學資格人士

+ 如其中一科為公民與社會發展, 最低入學要求為在該科取得「達標」, 以及在其他四科 (包括中國語文\*和英國語文) 達第二級。數學延伸部份 (單元一或單元二) 如達第二級可獲接納為該五科之一。申請人可以應用學習科目的成績作申請之用。

\* 應用學習中文 (非華語學生適用) 的「達標」或以上成績符合中國語文的資歷要求。申請人或須參加面試。

#### Higher Diploma Programmes 高級文憑課程 Tuition Fee 學費

For Local Applicants 本地生申請:

**HK\$31,250 to**

**HK\$31,512** per semester 每學期

one year in total 每年合共: HK\$62,500 to HK\$63,024

For Non-local Applicants 非本地生申請:

HK\$34,410 to HK\$40,096 per semester 每學期

HK\$68,820 to HK\$80,192 per year 每年學費

### College of International Education, HKBU 香港浸會大學國際學院

#### Shek Mun (Shatin) Campus, Hong Kong Baptist University

#### 香港浸會大學石門 (沙田) 校園

8 On Muk Street, Shek Mun, Shatin (MTR Shek Mun Station Exit D)  
沙田石門安睦街8號 (港鐵石門站D出口)

☎ 3411 3240

✉ [applycie@hkbu.edu.hk](mailto:applycie@hkbu.edu.hk)

🌐 [cie.hkbu.edu.hk/admissions](http://cie.hkbu.edu.hk/admissions)

#### Application Deadline 截止申請日期

Local Applicants 本地生:

**7 August 2025**

Non-local Applicants 非本地生:

**27 June 2025**



The School reserves the right to cancel any programme, make alterations to programme title and/or content or change the programme offering venue if circumstances warrant.  
本院可因應情況取消任何課程、修改課程名稱、內容或更改課程的上課地點。